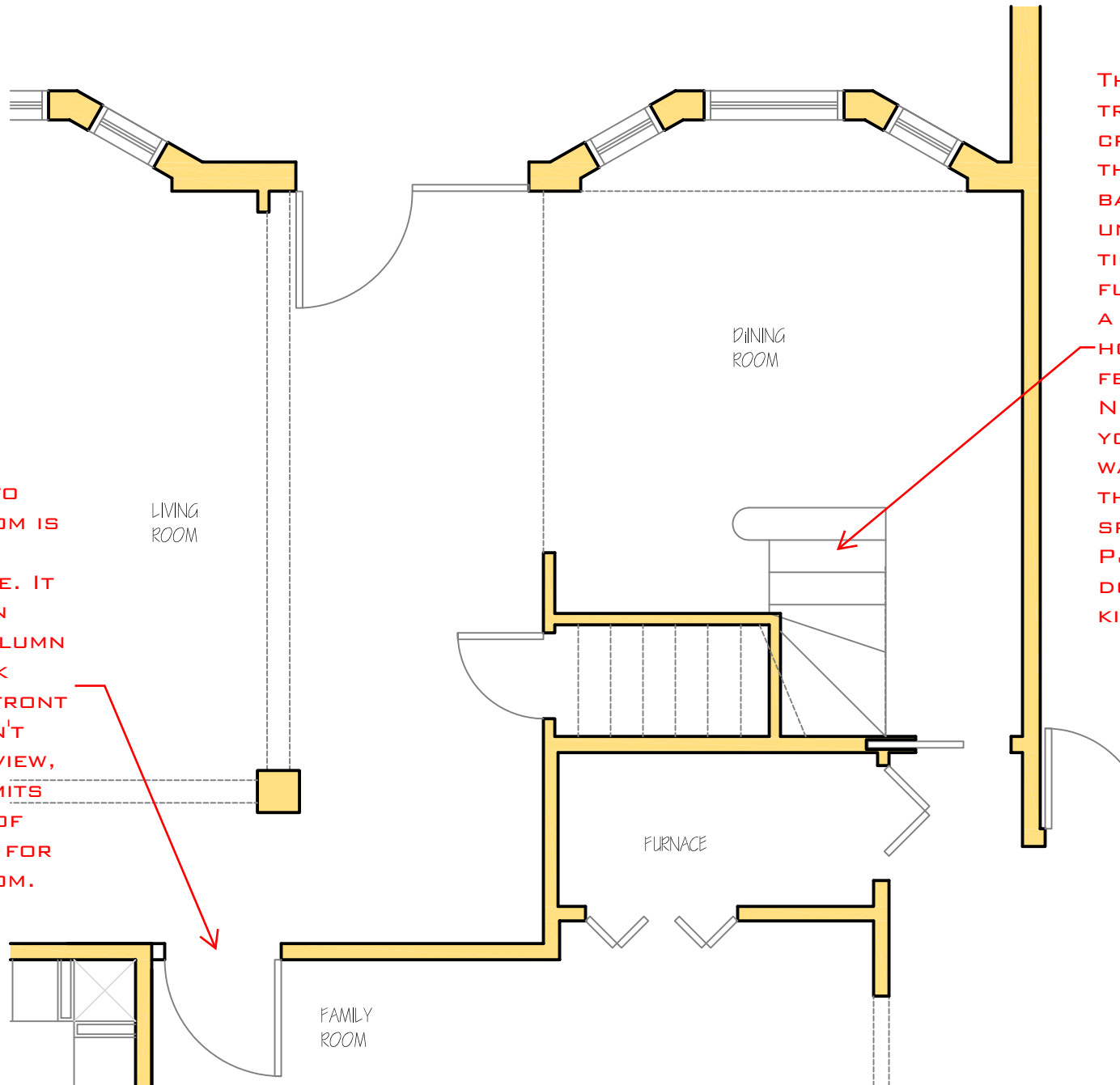


THIS OPENING TO THE FAMILY ROOM IS IN A REALLY AWKWARD PLACE. IT IS ALSO HIDDEN BEHIND THE COLUMN WHEN YOU WALK THROUGH THE FRONT DOOR. YOU CAN'T SEE IT IN THIS VIEW, BUT IT ALSO LIMITS THE LOCATION OF THE FURNITURE FOR THE FAMILY ROOM.



THIS STAIR AND THE TRAFFIC FLOW IT CREATES CAUSES THIS ROOM TO BASICALLY BE UNUSED. ITS TOO TIGHT FOR FURNITURE AND OR A PIANO. FOR A HOME THIS SIZE, IT FEELS AWKWARD. NOT TO MENTION, YOU WILL HAVE TO WALK THROUGH THESE MORE FORMAL SPACES IN YOUR PJ'S AS YOU COME DOWN STAIRS TO THE KITCHEN.