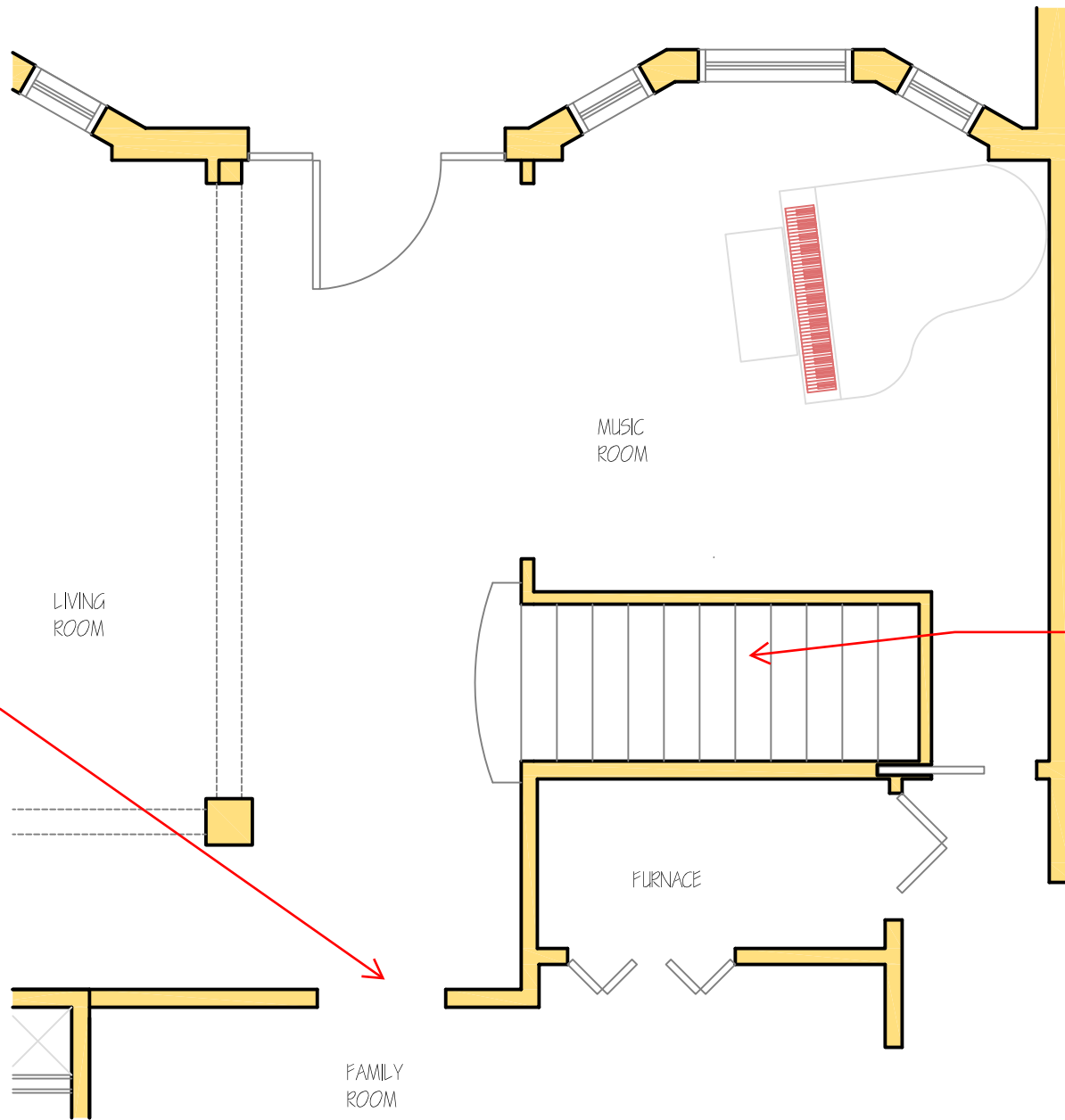


THIS LOCATION  
ALLOWS FOR BETTER  
FLOW FROM SPACE  
TO SPACE. THE  
THING I LIKE MOST  
ABOUT IT, IS WHEN  
YOU WALK IN THE  
FRONT DOOR, YOU  
AREN'T LOOKING AT  
A WALL, MAKING THIS  
SIZE OF HOME FEEL  
SMALL AND  
COMPARTMENTAL.  
INSTEAD IT LEADS  
THE EYE THROUGH  
THE SPACE, WITHOUT  
IT BEING A COMPLETE  
OPEN HOME PLAN.



THE NEW STAIR  
LOCATION CREATES  
A BETTER CENTRAL  
ACCESS IN THE  
HOME. IT'S LOCATION  
ALSO ALLOWS FOR  
THE HOME OWNER TO  
NOT LOSE A  
FUNCTIONAL ROOM.  
WE NEEDED TO HAVE  
ONE STAIR IN THE  
SPACE TO GET THE  
AMOUNT OF STAIRS  
WE NEED, BUT IT  
ALSO IS MORE  
WELCOMING AND  
DOESN'T PUT THE  
STAIR UP A DARK  
TUNNEL. THIS WORKS  
BECAUSE THE ENTRY  
HALL IS OVER 6 FEET  
WIDE.